

Mounts

Mounts

Schneider offers a variety of mounts with common thread sizes to fit on most camera lens systems. SH mount is the standard, when high flexibility is needed. The filters are held by a retainer ring. For M30.5 thread SN1, offers high clear aperture, which avoids vignetting, developed for sophisticated requirements. For filters which require rotation, DH mount is the right choice. Our SN2 with locking screw is especially designed for industrial applications. The locking mechanism, secures the filter after adjusting the correct orientation. Filters are glued into the mount. All mounts have female and male M- thread, and can be stacked when more than one filter is required.

CMT- mount designed for machine vision cameras with popular C-mount thread.

For custom mount designs, please call us.

Key Features

- All mounts have female and male M- thread (except CMT)
- Stackable (except CMT)
- SN2 with a locking screw
- High clear aperture

Applications

- Mounted on lenses in imaging applications
- Mounted on measurement instruments
- CMT mounted in cameras

Technical Specifications

| | |
|-------------|-----------------------|
| Mount types | SH, SN1, SN2, DH, CMT |
| Material | Metal |

Contact

Jos. Schneider Optische Werke GmbH
 Ringstraße 132
 55543 Bad Kreuznach
 Germany
 Phone +49 671 601-351
 Fax +49 671 601-181-351
www.schneiderkreuznach.com/industrialoptics
industrie@schneiderkreuznach.com

Schneider Asia Pacific Ltd.
 20/F Central Tower, 28 Queen's Road
 Central, Hong Kong
 China
 Phone +852 8302 0301
 Fax +852 8302 4722
www.schneider-asiapacific.com
info@schneider-asiapacific.com

Schneider Optics Inc.
 285 Oser Ave.
 Hauppauge, NY 11788
 USA
 Phone +1 631 761-5000
 Fax +1 631 761-5090
www.schneideroptics.com
oem@schneideroptics.com

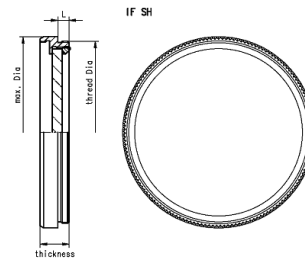
SH Mount

SH Mount

Schneider offers a variety of mounts with common thread sizes to fit on most camera lens systems. SH mount is the standard, when high flexibility is needed. Filters are held by retainer rings. SH mounts are extreme robust.

All SH mounts have a female and male M-thread, and can be stacked when more than one filter must be combined.

Please call us for assistance.



Key Features

- All mounts have female and male M- thread
- M 25.5 to M 67 available (except of M 30.5)
- Stackable
- Black Anodized Brass

Applications

- Mounted on lenses in imaging applications
- Mounted on measurement instruments

Technical Specifications

| | |
|----------------------|---|
| Mount types | SH |
| Max diameter | Thread +4 mm |
| Glass thickness | 1.8 mm – 2.2 mm |
| Thickness | 6.4 mm (for pitch 0.5) or 7 mm (for pitch 0.75) |
| Length of thread [L] | 2.5 mm |

| Thread Size | Pitch [mm/ thread] | Filter Dia. [mm] | CA [mm] | Retainer Ring |
|-------------|--------------------|------------------|---------|---------------|
| M 25.5 | 0.5 | 23.0 | 20.8 | M 24 x 0.5 |
| M 27.0 | 0.5 | 24.0 | 21.8 | M 25 x 0.5 |
| M 34.0 | 0.5 | 31.0 | 28.8 | M 32 x 0.5 |
| M 35.5 | 0.5 | 33.0 | 29.8 | M 33 x 0.5 |
| M 37.0 | 0.75 | 34.0 | 31.8 | M 35 x 0.5 |
| M 39.0 | 0.5 | 37.0 | 33.8 | M 37 x 0.5 |
| M 40.5 | 0.5 | 38.0 | 35.8 | M 39 x 0.5 |
| M 43.0 | 0.75 | 40.0 | 37.8 | M 41 x 0.5 |
| M 46.0 | 0.75 | 43.0 | 40.8 | M 44 x 0.5 |
| M 49.0 | 0.75 | 46.0 | 43.8 | M 47 x 0.5 |
| M 52.0 | 0.75 | 49.0 | 46.8 | M 50 x 0.5 |
| M 55.0 | 0.75 | 52.0 | 49.8 | M 53 x 0.5 |
| M 58.0 | 0.75 | 55.0 | 52.8 | M 56 x 0.5 |
| M 62.0 | 0.75 | 59.0 | 56.8 | M 60 x 0.5 |
| M 67.0 | 0.75 | 64.0 | 61.8 | M 65 x 0.5 |

SN1 Mount

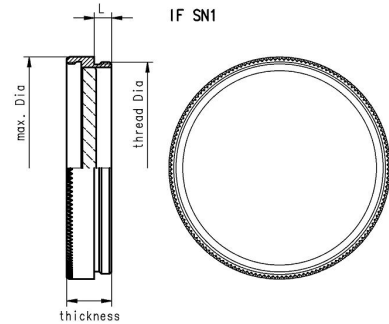
SN1 Mount

SN1 Mount was designed, for in vision industry popular M 30.5 thread. With its high clear aperture, vignetting can be avoided, even for wide angle applications. The filter is glued into the mount. In order to secure it against vibrations when integrated into robots or production lines. It is ideal to be used in automated fabrication.

SN1 mount has a female and male M-thread, and can be stacked when more than one filter must be combined.

Schneider Kreuznach recommends SN1 for 2/3" inch C-mount compact series lenses.

Please call us for assistance.



Key Features

- Maximum clear aperture
- No vignetting
- Stackable
- Black Anodized Brass

Applications

- To be mounted on lenses with M 30.5 thread
- Build in measurement instruments

Technical Specifications

| | |
|-----------------------|-----------------|
| Mount types | SN1 |
| Max diameter | 32 mm |
| Glass thickness | 1.8 mm – 2.2 mm |
| Thickness | 6.5 mm |
| Length of threath [L] | 2.5 mm |

| Thread Size | Pitch [mm/ thread] | Filter Dia. [mm] | CA [mm] |
|-------------|--------------------|------------------|---------|
| M 30.5 | 0.5 | 29.0 | 28.0 |

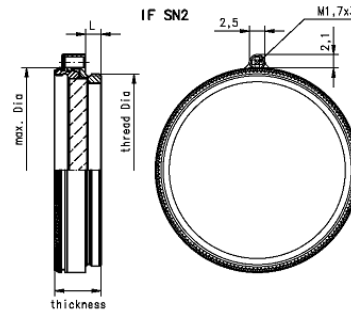
SN2 Mount

SN2 Mount

The SN2 Mount designed for polarizers, achieves highest possible aperture, avoiding vignetting in machine vision systems. Its unique locking mechanism fixes the correct orientation, even in typical industrial environment. Filters are glued into the mount, to secure them against vibrations when integrated into robots or production lines. Ideal to be used in automated fabrication.

SN2 mounts have a female and male M-thread, and can be stacked when more than one filter must be combined.

Please call us for assistance.



Key Features

- high clear aperture
- no vignetting
- locking screw secures position of polarizing orientation
- All mounts have female and male M- thread
- M 25.5 to M 67 available (except of M 30.5)
- Stackable

Applications

- Mounted on lenses in imaging applications
- Mounted on measurement instruments

Technical Specifications

| | |
|----------------------|----------------|
| Mount types | SN2 |
| Max diameter | Thread +1.5 mm |
| Glass thickness | 2.7 mm |
| Thickness | 5.7 mm |
| Length of thread [L] | 2.5 mm |

| Thread Size | Pitch [mm/ thread] | Filter Dia. [mm] | CA [mm] |
|-------------|--------------------|------------------|---------|
| M 25.5 | 0.5 | 23.0 | 22.7 |
| M 27.0 | 0.5 | 24.0 | 23.7 |
| M 30.5 | 0.5 | 28.0 | 26.7 |
| M 34.0 | 0.5 | 31.0 | 29.7 |
| M 35.5 | 0.5 | 33.0 | 31.7 |
| M 37.0 | 0.75 | 34.0 | 32.7 |
| M 40.5 | 0.5 | 38.0 | 36.7 |
| M 43.0 | 0.75 | 40.0 | 37.7 |
| M 46.0 | 0.75 | 43.0 | 41.7 |
| M 49.0 | 0.75 | 46.0 | 44.7 |
| M 52.0 | 0.75 | 49.0 | 47.7 |
| M 55.0 | 0.75 | 52.0 | 50.7 |
| M 58.0 | 0.75 | 55.0 | 53.7 |
| M 62.0 | 0.75 | 59.0 | 57.7 |
| M 67.0 | 0.75 | 64.0 | 62.7 |

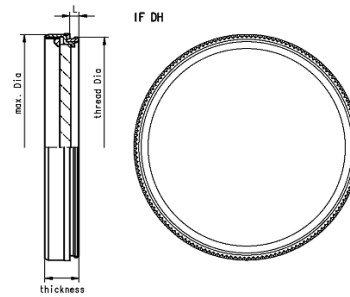
DH Mount

DH Mount

Schneider offers a variety of mounts for polarizers with common thread sizes to fit on most camera lens systems. The DH mount is rotatable to adjust polarization axis in the required orientation. Filters are held by retainer rings.

All DH mounts have a female and male M-thread and can be stacked when more than one filter must be combined.

Please call us for assistance.



Key Features

- Rotatable to adjust correct orientation
- All mounts have female and male M- thread
- M 25.5 to M 67 available
- Stackable
- Black Anodized Brass

Applications

- Mounted on lenses in imaging applications
- Mounted on measurement instruments

Technical Specifications

| | |
|----------------------|-----------------|
| Mount types | DH |
| Max diameter | Thread +1.5 mm |
| Glass thickness | 2.7 mm – 3.0 mm |
| Thickness | 5.7 mm |
| Length of thread [L] | 2.5 mm |

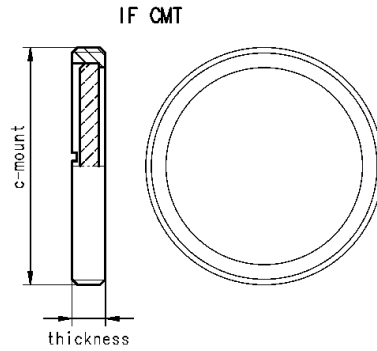
| Thread Size | Pitch [mm/ thread] | Filter Dia. [mm] | CA [mm] | Retainer Ring |
|-------------|--------------------|------------------|---------|---------------|
| M 25.5 | 0.5 | 22.0 | 20.8 | M 23 x 0.5 |
| M 27.0 | 0.5 | 23.0 | 21.8 | M 25 x 0.5 |
| M 30.5 | 0.5 | 27.0 | 25.8 | M 28 x 0.5 |
| M 35.5 | 0.5 | 32.0 | 30.8 | M 33 x 0.5 |
| M 37.0 | 0.75 | 33.0 | 31.8 | M 35 x 0.5 |
| M 39.0 | 0.5 | 36.0 | 34.8 | M 37 x 0.5 |
| M 40.5 | 0.5 | 37.0 | 35.8 | M 39 x 0.5 |
| M 43.0 | 0.75 | 39.0 | 37.8 | M 41 x 0.5 |
| M 46.0 | 0.75 | 42.0 | 40.8 | M 44 x 0.5 |
| M 49.0 | 0.75 | 45.0 | 43.8 | M 47 x 0.5 |
| M 52.0 | 0.75 | 48.0 | 46.8 | M 50 x 0.5 |
| M 55.0 | 0.75 | 51.0 | 49.8 | M 53 x 0.5 |
| M 58.0 | 0.75 | 54.0 | 52.8 | M 56 x 0.5 |
| M 62.0 | 0.75 | 58.0 | 56.8 | M 60 x 0.5 |
| M 67.0 | 0.75 | 63.0 | 61.8 | M 65 x 0.5 |

CMT Mount

CMT Mount

Defined by 1" (25.4mm) diameter and 32 turns/ inch pitch, C-mount thread is a popular camera mount in machine vision industry. Schneider Kreuznach offers for most filters a CMT mount option. So that filters can go in any c-mount based mechanics in vision systems. Another popular application, CMT mounts can easily be used for, is placing a filter in front of the sensor into the camera. The extension of the back flange distance has to be considered for imaging applications.

Please call us for assistance.



Key Features

- Maximum clear aperture
- Fits in C-mount cameras
- Black Anodized Brass

Applications

- To be mounted in C-mount cameras
- Vision systems based on C-mount mechanics

Technical Specifications

| | |
|-----------------|-----------------|
| Mount types | CMT |
| Max diameter | 25.4 mm |
| Glass thickness | 1.8 mm – 2.2 mm |
| Thickness | 3.6mm |

| Thread | Thread Size | Filter Dia. [mm] | CA [mm] |
|---------|-------------|------------------|---------|
| C-mount | 1 -32 | 22.0 | 21.1 |